

WERKLOFT



FICHATZECK BERLIN
BAUJAHR 1929
10000 KG TRAGFK.
3000 KG "

1114

1112



WERKLOFT

Rough and industrial, yet elegant and stylish - where a woodworking company once operated, now spectacular celebrations are held. The impressive patina left behind by this time is unmistakable. In our authentic industrial loft, Chesterfield sofas, lovingly restored workbenches, and upholstered chairs from a former SED Politburo compete with un-plastered factory walls.

In addition to a separate area with seating made from pallet furniture, this loft also houses a Chesterfield lounge, where you can retreat with your guests as you please. Another highlight of this location is the bookable dance floor in the neighboring loft "Mr. Hemingway", which also features another bar and a comfortable smoking room.

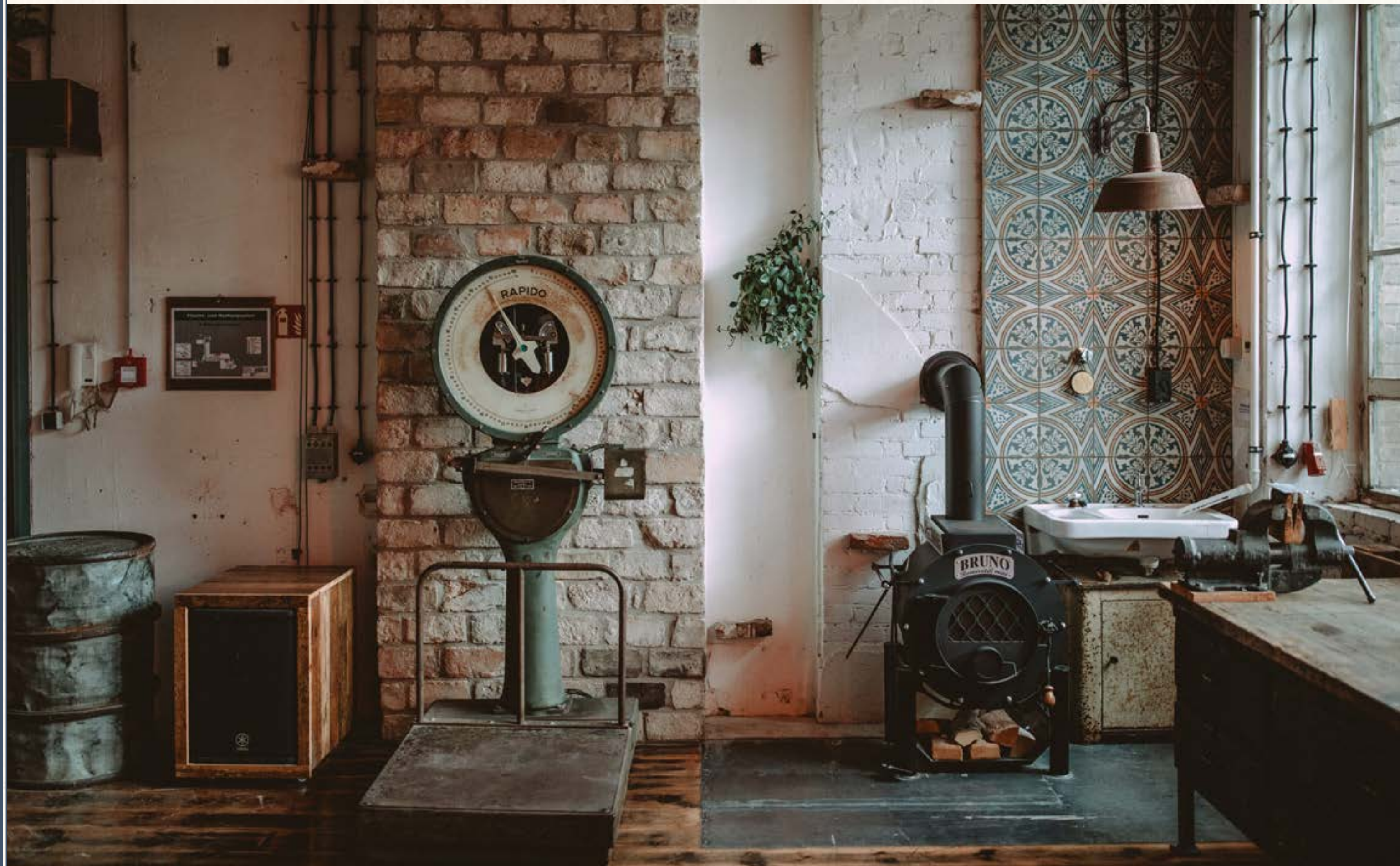
Rough and industrial, yet elegant and stylish with an impressive patina.

225

m²

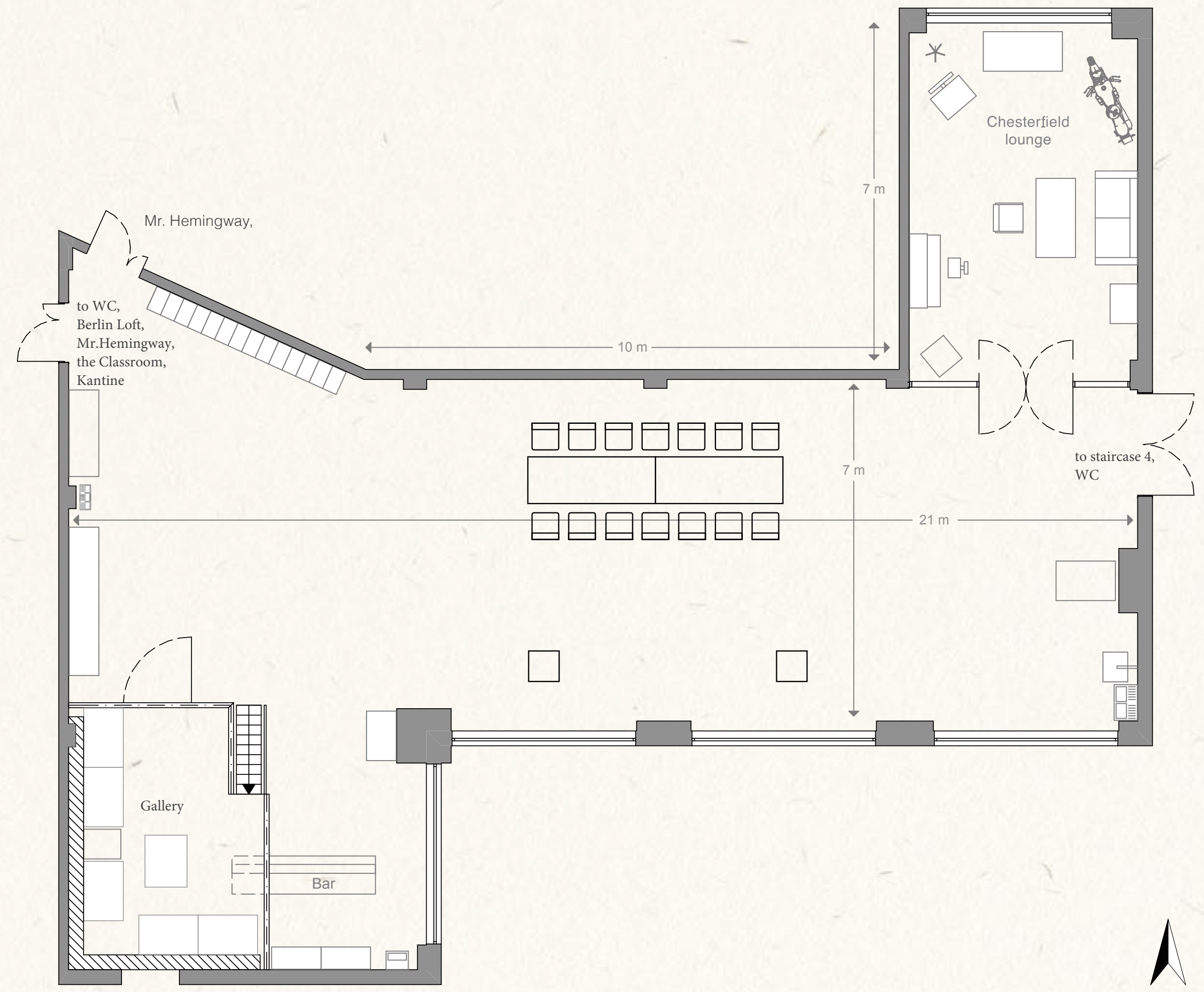
199

people max.



WERKLOFT

HOF 4 | AUFANG 4 | 2. OG



FACTS

Floor space	225 m ²
Ceiling height	3,8 m
Room layout	1 main room, Bar Gallery-Lounge, Chesterfield-Lounge, wood-burning stove, coat check, WC Optional bookable dance floor with a separate bar and smoking room.

SEAT LAYOUT

Row	⋮⋮⋮⋮	up to 120 people
Parliament	⋮⋮⋮⋮	up to 40 people
U-Shape	⋮⋮⋮⋮	up to 57 people
Banquet	⋮⋮⋮⋮	up to 100 people
Standing		up to 199 people

We are a full-service location and generally offer events including catering, drinks, audio-visual equipment, and staff..

